

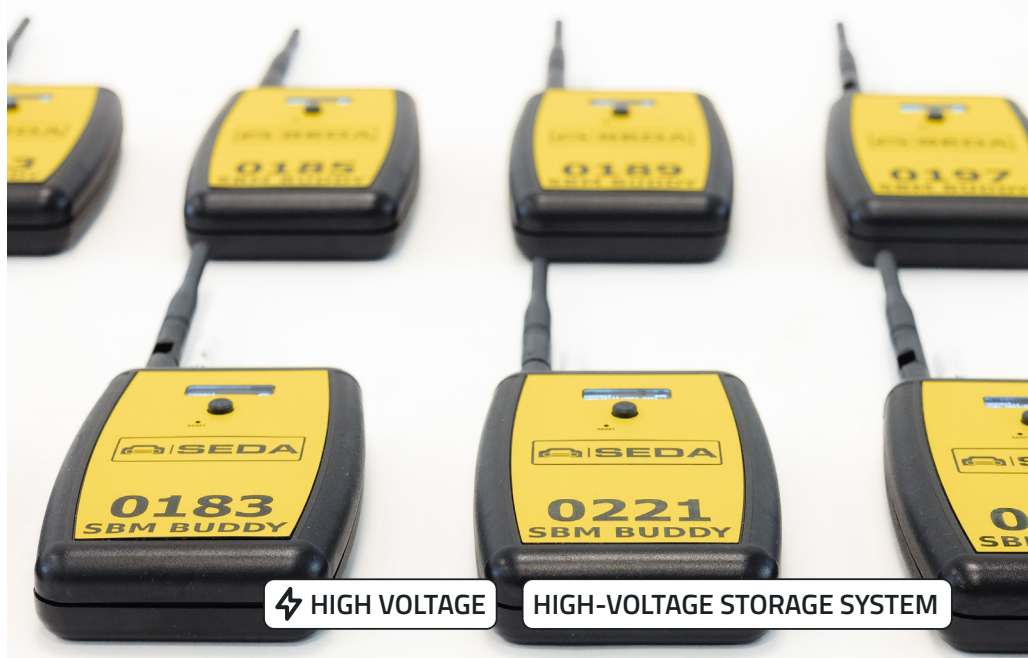


## SEDA SBM BUDDY

C-90000

### BENEFITS

- Stationary or mobile version
- Early detection of thermal runaway
- Measurement of temperature and gases
- Traceable data recording
- Precise positioning (GPS)
- Comprehensive alarm management (call, SMS, email)
- Data accessible online
- Easy configuration (adjustable contact information and limits)
- Active battery monitoring (battery passport compatible)



 HIGH VOLTAGE

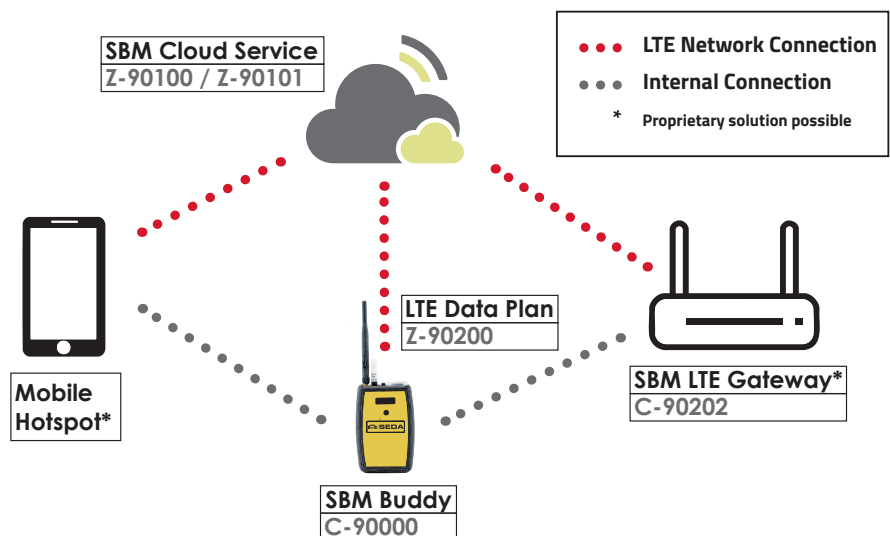
HIGH-VOLTAGE STORAGE SYSTEM

Reliable monitoring solution for critical and non-critical lithium-ion energy storage systems and electric vehicles



The SBM (Smart Battery Monitoring) Buddy was specifically developed to ensure the safety of lithium-ion batteries and high-voltage storage systems in electric vehicles during storage, transport, and operation. Equipped with state-of-the-art sensors and alarm management, the system offers comprehensive monitoring capabilities that go beyond simple measurements.

The sensor detects temperature, humidity, and pressure, as well as other gases such as carbon monoxide, hydrogen, and smoke (VOCs) in the parts-per-million (PPM) range. If predefined threshold values are exceeded, a comprehensive alarm management system is activated. In addition to acoustic and visual alerts, certain events will trigger a phone call, SMS, and email notification. The SBM Buddy can be used both stationary and mobile, making it ideal for closely monitoring sensitive areas such as transport and storage.



### SEDA Environmental LLC

135 Walter Way,  
Fayetteville, GA 30214

T: +1 770 681 0474  
E: [bruce@seda-usa.com](mailto:bruce@seda-usa.com)  
W: [www.seda-usa.com](http://www.seda-usa.com)

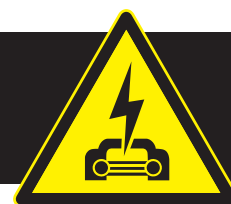




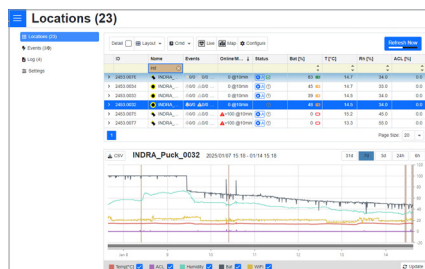
# SEDA SBM BUDDY C-90000

## ⚡ HIGH VOLTAGE > HIGH-VOLTAGE STORAGE SYSTEM

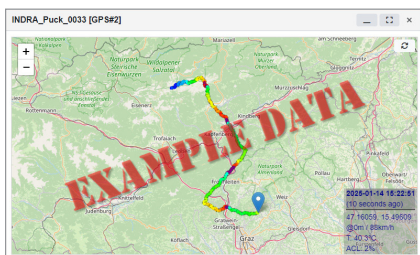
Reliable monitoring solution for critical and non-critical lithium-ion energy storage systems and electric vehicles



**SBM Buddy** is a compact monitoring device that continuously measures key parameters such as temperature and gases (e.g., carbon monoxide and hydrogen). It features wireless data transmission, a long battery life of up to one year (depending on the monitoring mode), and can issue visual and acoustic alarms. In areas without cellular reception—such as basements or metal enclosures—a second device acts as a repeater. For mobile use, the Buddy is equipped with GPS and LTE functionality.



SBM Cloud - WebApp



View GPS-Tracking

### SBM Buddy



Specifications	
Dimensions	230 x 78 x 22 mm
Weight	228 g
Battery	3.7V 5200mAh, 3A
Charging	USB-C, wireless (Qi) supported
Measurements	
Temperature, humidity, and pressure ACL (Air Contamination Level): Carbon Monoxide (CO), Hydrogen (H <sub>2</sub> ), VOCs (Smoke)	
Alarm	
Internal: Visual / Acoustic External: Call / SMS / Email (via SBM Cloud)	
Cloud Connectivity	
LTE Network (integrated LTE modem, SIM card capable) Wi-Fi (mobile hotspot, wireless LAN)	
Data Recording	
External: via SBM Cloud Internal: microSD card, 32 GB GPS: precise positioning	

**SBM Cloud** is the central platform that collects and processes all data from SBM devices and sends notifications via phone call, SMS, or email in the event of critical incidents. Through an internet connection, the cloud enables remote control and configuration of the devices, ensuring reliable monitoring even from a distance.

### ORDER NUMBER

C-90000	SBM Buddy
Extensions / Accessories	
Z-90100	SBM Cloud Service per customer
Z-90101	SBM Cloud Service per device
Z-90200	LTE Data Plan
C-90201	Buddy Qi Charger
C-90202	SBM LTE Gateway
C-90203	SBM Buddy Temperature sensor
C-90204	SBM Buddy Extension cable
C-90205	SBM Buddy Holster

### SBM Cloud



Remote Notification	Yes
Alert type	Call / SMS / E-Mail
Configuration	Customizable threshold settings
User Interface	Webbrowser with Login
Platform	Webserver/Cloud

### MORE INFOS

- Product video
- More images
- Additional specifications
- Online configurator

