



SEDA VEHICLE TROLLEY

A-527626 / A-527627



Can be used as a standalone workstation

BENEFITS

- Forklift-free maneuvering
- Easy positioning
- Stable wheel system with stop function
- For use on tilt lifts and hoists
- Separate workstation
- Special designs
- Also for new cars



Vehicle Trolley for forklift-free maneuvering



The SEDA Vehicle Trolley is specifically designed for SEDA tilt lifts and single-post hoists, enabling forklift-free maneuvering. It is available in three versions:

Vehicle trolley Type A with serrated support surface for use with a tilt and single-post lift

- 4 standard supports
- 2 crossbars
- 2 swivel wheels and 2 fixed wheels



Vehicle trolley Type B with flat support surface (specifically designed for parts sellers to prevent damage) for use with a tilt and single- post lift

- 2 crossbars
- 2 swivel wheels and 2 fixed wheels



Vehicle trolley Type C for use with a two-post lift

- 1 crossbar
- 4 swivel wheels



SEDA-Umwelttechnik GmbH

Schwendter Str. 10 / 6345 Kössen / Tirol / Austria
VAT-ID.: ATU56621622 / FB-Nr.: FN 231790 v / FB-Gericht: Innsbruck
Certified company according to DIN EN ISO 9001

T: +43 5375 6318-0
E: info@seda-international.com
W: www.seda-international.com

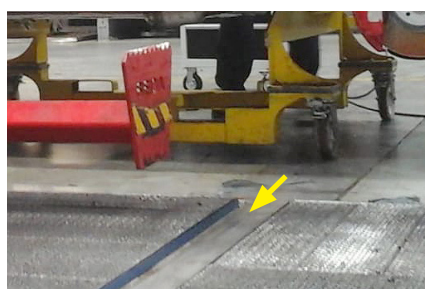


SEDA VEHICLE TROLLEY

A-527626 / A-527627



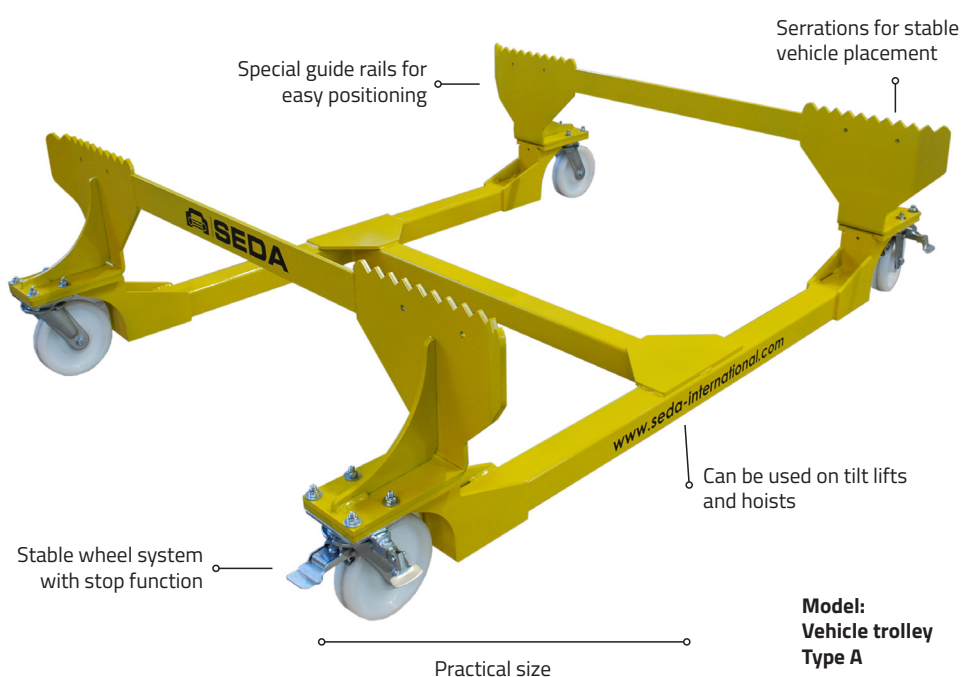
Easy to maneuver by one person



Perfect guidance of the trolley through special guide grooves in the collection trays

Vehicle Trolley for forklift-free maneuvering

Key features of this robust trolley include its sturdy construction with four durable wheels equipped with a stop function, as well as special guide rails that ensure compatibility with all SEDA tilt platforms and lifts. Thanks to its design, the trolley can be easily maneuvered by a single person. Additionally, the SEDA Vehicle Trolley can also be used as an independent workstation.



Model:
Vehicle trolley
Type A

MORE INFORMATION

- Product video
- More images
- Additional technical specifications
- Online configurator



Forklift-free positioning

ORDER NUMBER

A-527626	SEDA Vehicle trolley Type A with serrated support surface
A-527627	SEDA Vehicle trolley Type B with flat support surface
A-527974	SEDA Vehicle trolley Type C for use with a two-post lift

TECHNICAL SPECIFICATIONS

Maximum load capacity	up to 3,5 t
Trolley weight	120 kg
Dimensions	1,6 x 2 x 0,6 m

