



World leader in vehicle
de-pollution technology



SEDA CarFlattener N-37100



For an efficient transportation of car wrecks to the shredder, it is necessary to crush the bodies as flat as possible to save space for transport.

Two solid covers, hinged on opposite broad sides with a crush force of 110 tons crush the scrap vehicle to a length of 3,8 m and a height of 35 cm in one operation. Any liquids are collected and discharged into an external container.

Available in a stationary or mobile version, by flattening the ELVs you save a lot of transport costs.



Powerful engine with high compression force



**Compacted car bodies
are easy to transport**



„More
Information
and a demo
video on:

www.seda-international.com“



SEDA-Umwelttechnik GmbH

Schwendter Str. 10 / A-6345 Kössen/Tirol/Austria
UID-Nr.: ATU56621622 / FB-Nr.: FN 231790 v / FB-Gericht: Innsbruck
Certified company DIN EN ISO 9001

P: +43 5375 6318-0
F: +43 5375 6318-9
E: info@seda.at
Web: www.seda-international.com



World leader in vehicle
de-pollution technology



SEDA CarFlattener

N-37100

Car press



For example, in the case of medium-sized car bodies (including engine) a loading of 13 to 15 tons can be achieved due to more efficient loading. This is also possible for trucks with a cargo hold of 15 tons, whereby a freight space utilization of 90 to 100 percent is guaranteed. This ensures the most efficient use of cargo holds.

Submersible pump for liquids and a central lubrication system for the lid and cylinder bearings are optionally available.



Pressed flat car bodies ready to transport

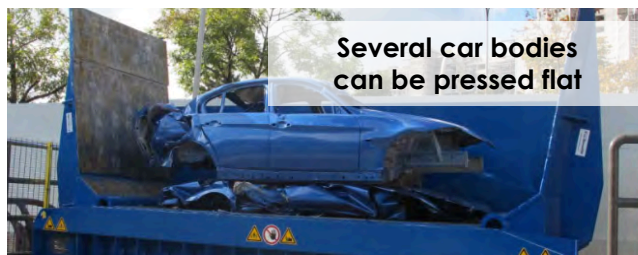


Car body before

Car body afterwards

TECHNICAL DETAILS

Overall length:	9400 mm
Overall width :	2800 mm
Overall height:	3730 mm
Total weight:	22 t
Pressing force of the two hinged lid cylinder:	2 x 940 kN / 300 bar
Engine power:	30 kW
Dimensions open:	5700 x 2200 mm
Dimensions closed:	4300 x 2200 mm
Height by squeezing:	about 350-400 mm
Height above the ground:	1210 mm
Oil circuit capacity:	500 lt
Cycle time:	about 50 sec.



Several car bodies
can be pressed flat

ORDER INFORMATION

- N-37100** SEDA CarFlattener manually electric
- N-37101** SEDA CarFlattener manually diesel
- N-37102** SEDA CarFlattener autom. electric
- N-37103** SEDA CarFlattener autom. diesel



SEDA-Umwelttechnik GmbH

Schwendter Str. 10 / A-6345 Kössen/Tirol/Austria
UID-Nr.: ATU56621622 / FB-Nr.: FN 231790 v / FB-Gericht: Innsbruck
Zertifizierter Betrieb nach DIN EN ISO 9001

P: +43 5375 6318-0
F: +43 5375 6318-9
E: info@seda.at
Web: www.seda-international.com