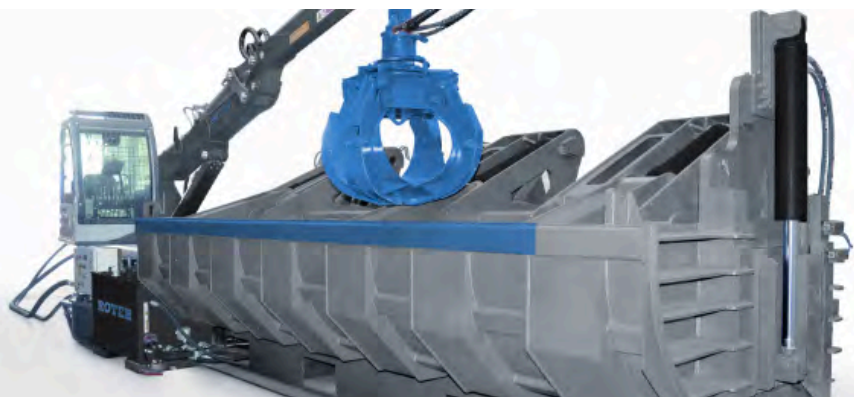
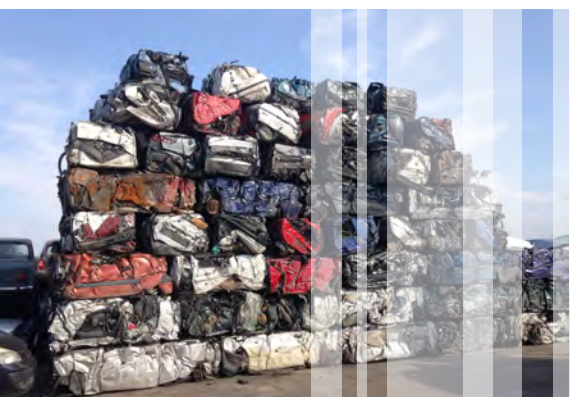




World leader in vehicle
de-pollution technology



SEDA CarBaler 37200



Your benefits:

- ✓ Highest pre-compression force on the market
- ✓ Widest loading box worldwide
- ✓ Robust construction
- ✓ No foundation necessary
- ✓ Rapid installation
- ✓ Low maintenance, easily accessible components
- ✓ Suitable for a wide range of metal and steel

The SEDA CarBaler is used for the compression of ELV car bodies making it the perfect choice for auto recyclers who need scrap packages for efficient storage or transportation.

This scrap baler is available in a stationary, semi-mobile or a mobile version or as a 3-axle trailer. There is the possibility to adapt the baler individually to the needs of the dismantler (see page 2).

3 strong hydraulic cylinders (per lid) guarantee the highest pre-compression force on the market and emphasizes the robust construction of the machine.

In general with the CarBaler you can simply compress all kinds of steel, iron and non-ferrous metals.



„Get more information
and have a look at
our online demo-
video on our
website:

www.seda-international.com“



SEDA-Umwelttechnik GmbH

Schwendter Str. 10 / A-6345 Kössen/Tirol/Austria
UID-Nr.: ATU56621622 / FB-Nr.: FN 231790 v / FB-Gericht: Innsbruck
Certified company DIN EN ISO 9001

P: +43 5375 6318-0
F: +43 5375 6318-9
E: info@seda.at
Web: www.seda-international.com



World leader in vehicle
de-pollution technology



SEDA Baler 37200

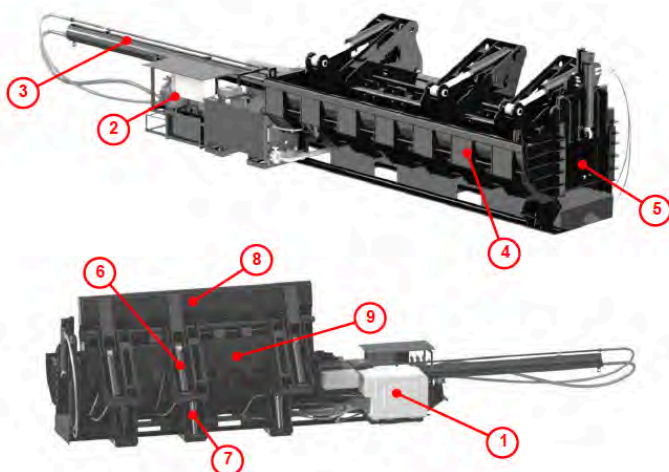
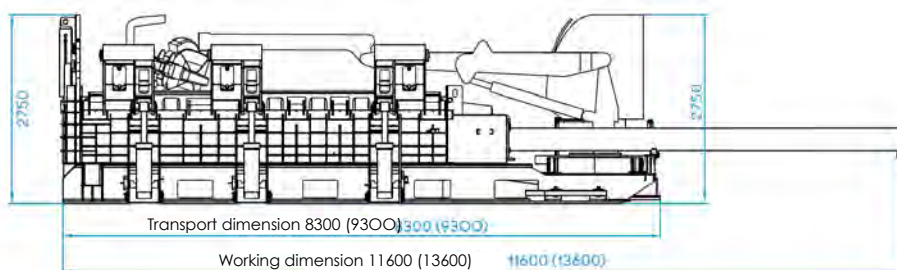
Compressing ELV car bodies



The CarBaler is built for tough working conditions and is extremely customizable according to production requirements.

Besides the default diesel drive there is an optional electric motor, a crane with cab and a special discharge flap.

Dimensions:



Components:

- 1 – Engine
- 2 – Hydraulic unit and electrical cabinet
- 3 – Push cylinder
- 4 – Charging box
- 5 – Eject door (optional)
- 6 – Side wall cylinders
- 7 – Lid cylinders
- 8 – Side wall
- 9 – Lid

TECHNICAL REQUIREMENTS (RR6)

| | |
|-------------------------------------|--------------------|
| Box material: | HARDOX 400/450 |
| Box length: | 6.000 mm |
| Opened box with: | 1.750 mm |
| Cylinders per lid: | 3 |
| Lids force: | 200 tons |
| Main cylinder force: | 155 tons |
| Bale size: | appr. 880 x 650 mm |
| Oil circuit capacity: | 700 lt |
| Diesel tank capacity: | 90 lt |
| Engine power: | 145/106 HP/KW |
| Working pressure: | 280 bar |
| Productions capacity scrap metal: | 8-14 tons/hour |
| Productions capacity vehicle scrap: | 15-20 tons/hour |
| Weight (*): | 22 tons |

(*) Standard configuration

ORDER INFORMATION

37200 SEDA CarPress (RR6/D) as stationary 6m version with diesel engine and eject door

MORE OPTIONS

Dimensions: 5 meters (RR5), 6 meters (RR6) in stationary version with diesel power and remote control

Alternative propulsion: Elektric engine 1 x 90 kW or 1 x 70 kW (EM)

Alternative version: hydraulic lifting legs (LL), transport container (RORO), 3-axle trailer(MOB)

Special equipment: Eject door (D), crane with cap (CR), rotating grippers (G300), heating for hydraulic oil (OH), engine heater (CH), collecting container for liquids (LC)



SEDA-Umwelttechnik GmbH

Schwendter Str. 10 / A-6345 Kössen/Tirol/Austria
UID-Nr.: ATU56621622 / FB-Nr.: FN 231790 v / FB-Gericht: Innsbruck
Certified company DIN EN ISO 9001

P: +43 5375 6318-0
F: +43 5375 6318-9
E: info@seda.at
Web: www.seda-international.com